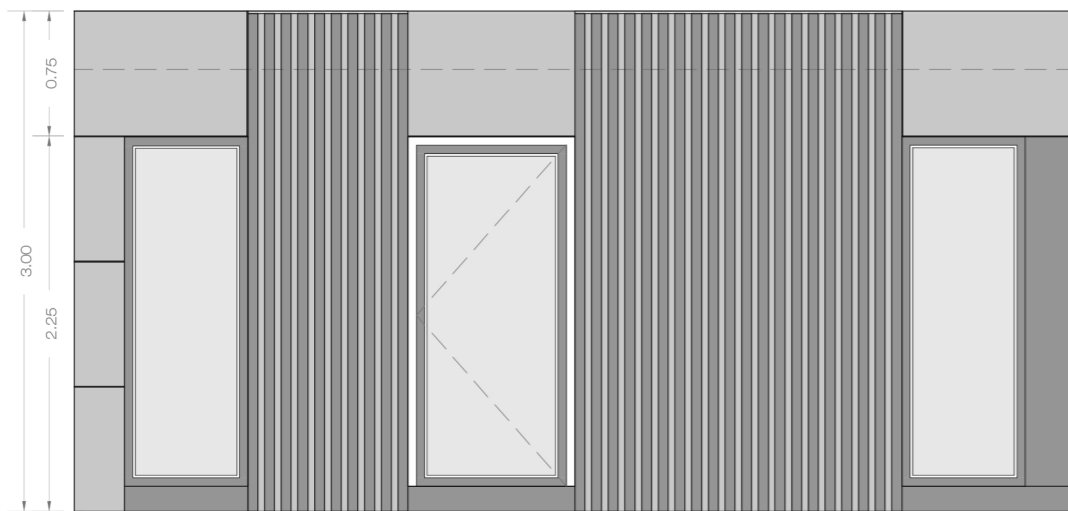
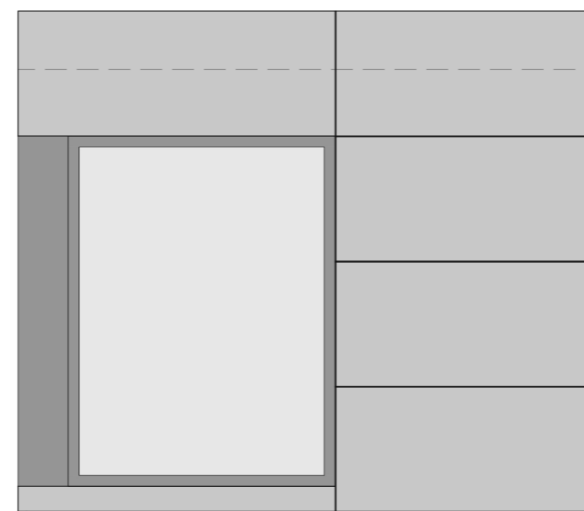


ALZADO PRINCIPAL



ALZADO LATERAL



## SUPERFICIES ÚTILES

DESPACHO ..... 17.40m<sup>2</sup>

---

**SUPERFICIE INTERNA 17.40m<sup>2</sup>**

**SUPERFICIE CONSTRUÍDA 21.00 m<sup>2</sup>**

**SG 21**  
MODELO "DESPACHO"

CASES  
CALIU